

THOMSON

PHONE HOLDER WITH FAST INDUCTION CHARGING (15W)



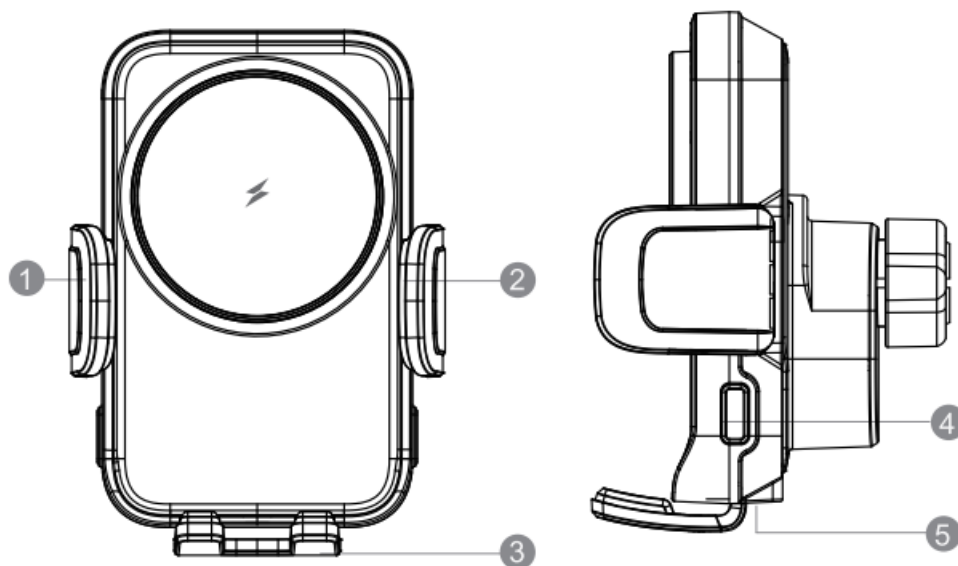
Thank you for your purchase.

Before using the device, please read this instruction manual. Please keep it for future reference or for another user, if you lend or resell the device.

IMPORTANT

- Your device is intended for domestic use only and inside your vehicle.
- Use, store only your device in an environment where the temperature is between 0°C and 35°C.
- This appliance is not intended for use by persons (including children) with reduced physical, sensory or mental capabilities or persons lacking experience or knowledge, unless they have been given supervision or prior instructions concerning use of the appliance by a person responsible for their safety.
- Children should be supervised to ensure that they do not play with the appliance.
- Do not expose it to moisture or any liquid product.
- Do not disassemble the product.
- This device must be used by an adult. Keep it out of reach of children.
- Do not place flammable objects, explosive substances or dangerous objects near your device.
- Do not disassemble your device or attempt to repair or modify it yourself. Do not use your device if it has been subjected to shock or damage.
- To avoid risk of electric shock, unplug your appliance from the power supply and from any appliance before cleaning or when not in use.
- For external cleaning, use a soft, clean, slightly damp cloth.
- The use of solvents and improper use can irreversibly damage the product and create risks..

Product Description



1. Left arm clamp

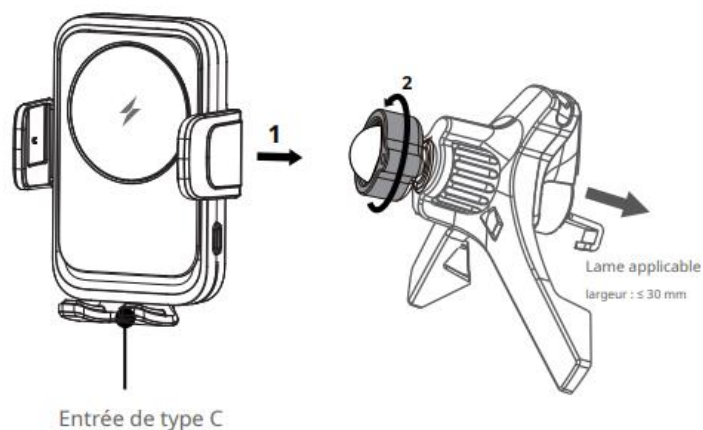
3. Low support

5. USB-C port

2. Right arm clamp

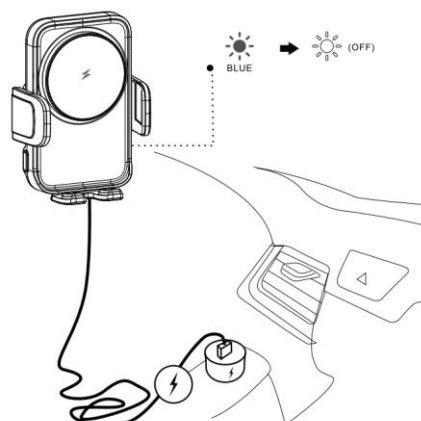
4. Automatic opening button

Fix your device: on the ventilation grille or on your dashboard of your vehicle

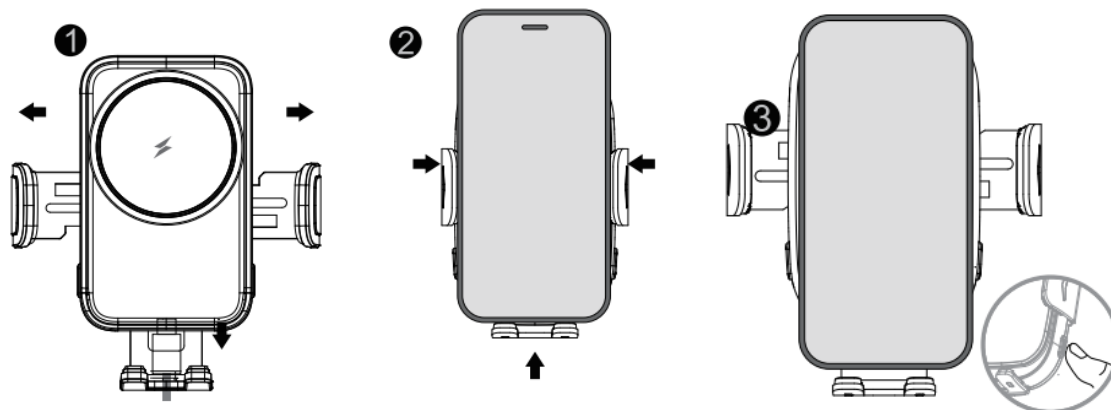


Connect the device: insert your USB-C cable to your device (5) and make sure that your cable is properly connected to your cigarette lighter charger (not supplied). The blue light will turn on if your device is powered on.

To ensure a fast charging experience, use a QC2.0/QC3.0 or 18W+ USB car charger adapter.



Automatic opening / automatic closing: press the button (4) to trigger opening



Product technical characteristics

Input voltage: 5 V/2 A, 9 V/2 A, 9 V/2.22 A (QC2.0/3.0/AFC).

Output Voltage: **5W, 7.5W, 10W, 15W max.**

Charging efficiency:**83% MAX**

TCompatible phone: Phone with built-in battery with Qi Induction charging

Compatible phone size: 4.7 to 6.7 inches

Charging frequency: 105-205 kHz

Device at end of life

When your device reaches the end of its life, do not throw it away in nature. Take it to a specialized waste center. Respect the environment and the regulations in force in your country.

Your device contains many recoverable or recyclable materials. Take it to a collection point or, failing that, to an approved service center so that it can be processed.

The European Directive 2012/19/EU on Waste Electrical and Electronic Equipment (WEEE), requires that used household appliances are not disposed of in the normal municipal waste stream. Used appliances must be collected separately in order to optimise the recovery rate and recycling of the materials they are made of and reduce the impact on human health and the environment.

Customer Service

For any information, please contact our customer service:contact@htc-equipements.com

Simplified EU Declaration of Conformity

Hereby, HTC SAS declares that this product reference 750 500 is in conformity with the RED directive: Directive 2014/53/EU. The complete EU declaration of conformity is available on our website at the following address:www.htcpro.fr/article/750500

Legal notice

This product has been manufactured and sold under the responsibility of HTC SAS. THOMSON, and the THOMSON logo are trademarks used under license by HTC SAS – for more information: www.thomson-brand.com.

All other products, services, company names, trademarks, trade names, product names and logos referenced herein are the property of their respective owners.